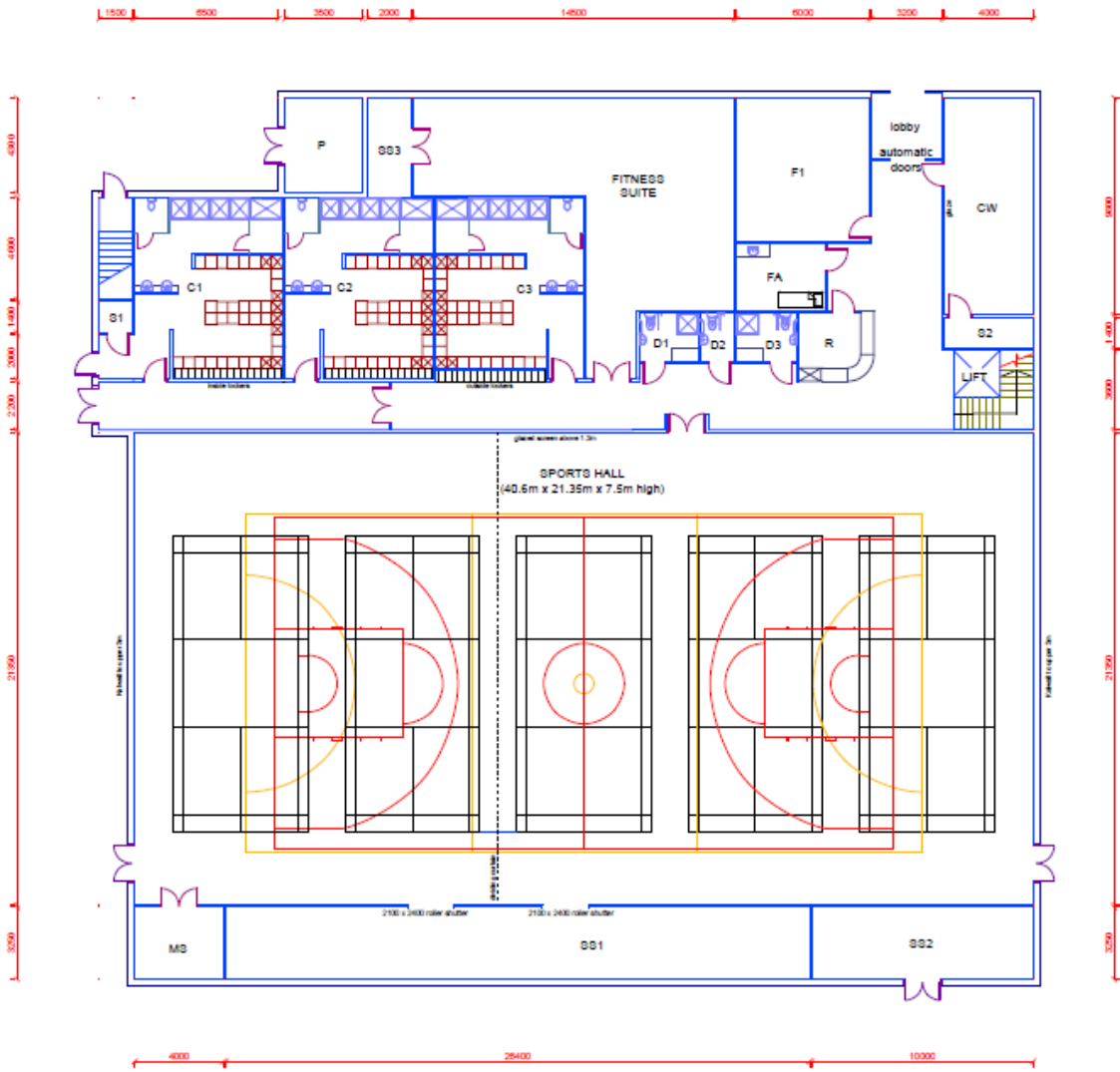
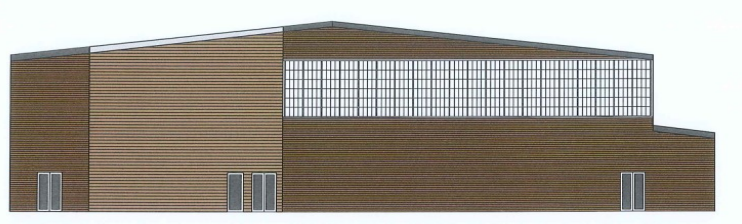


GROUND FLOOR



Proposed Sports Hall—Key Features

- 5 badminton court sized Sports Hall (867 m²)
- Fitness Suite (106 m²)
- Accessible Climbing Wall chamber
- 2 x Indoor Cricket Nets
- Home/Away, Male/Female Changing Rooms and Showers



SPORTS HALL
Pool Grammar School
School & Community





Project Need

If you have been in the existing gym facilities, you will know how much a properly-sized, fit for purpose, Sports Hall is seriously needed at Poole Grammar.

The gyms are over 50 years old and were built for a school of 600 students rather than over the 1,200 we have now. Our bid for a new Sports Hall is based on:

- Poor condition
- Overcrowding
- Critical need

Funding

We take the opportunity to update and submit our Sports Hall bid against the Government's Condition Improvement Fund which is available for all Academies each year.

The fund is typically 3 times over-subscribed and bids are scored more highly where Academies demonstrate additional funding support for their projects.

This is where the Parent Staff Association (PSA) fund-raising activities, parental voluntary / alumni contributions, and other funding sources are very much valued.

Your donation/support makes a huge difference to the success of winning the capital funding required. If you wish to help further—read on!

Project Plans

We should hear if we have been successful or not in April 2021. If we have, then:

Phase 1—will be to proceed with detailed surveys, planning permission, and tender preparations.

Phase 2—involves the demolition of the existing gyms, and the delivery of Portakabin facilities on our far playground to accommodate exams.

Phase 3—construction and fit out of the new Sports Hall on the site of the old gyms.

If all goes to plan, then the new Sports Hall will be available for school and community use in Spring 2023. See overleaf for our proposed floor plans.

What if we aren't successful with our bid?

Academies receive constructive feedback with any bids that are not successful.

We will take this on board and use it to improve our next submission. Any local funds raised to support the bid will be carried forward for the next bid submission.

How can I help?

There are many ways that the school community can pull together to help us realise our ambition for a new Sports Hall for the school and the local community:

As a Parent—your voluntary contributions are very much appreciated through the ParentPay system and this is open throughout the year.

PSA Support—the PSA run many fund-raising events throughout the school year. These include the Summer Extravaganza and themed evenings ranging from team quizzes, talent shows, music, and murder mystery events! Your support with all of these contributes to our Sports Hall fund-raising.

As Alumni —As an Old Grammarian you would be most welcome to contact us if you were considering any form of donation. Do contact the Bursar/Finance Department using the details below.

As Community Sports Organisations or Local Business — there are many Sports clubs and Businesses that are desperate for access to more or better facilities in Poole and Dorset. We would be delighted to hear from you so that we could share our plans and consider opportunities for mutual benefit and support. See below for contact details.



Contact Us

Sports Hall Fund Enquiry

c/o Bursar/Finance Department

Poole Grammar School

Gravel Hill

Poole BH17 9JU

